



RGS SURREY HILLS

Proud member of the Reigate Grammar School Family of Schools

Big Heart.
Big Opportunities.
Big Impact.

An aerial photograph of a two-story house with a grey roof and light-colored siding, partially obscured by dense green trees. The house is situated in a lush, wooded area with rolling hills in the background.

“

It was really easy to settle in. I love all the amazing opportunities available to me especially the weekend trips and evening activities... it's like I was always meant to be here.

YEAR 12 BOARDER, MEXICAN







A Warm Welcome.



Welcome to RGS Surrey Hills.

Thank you for your interest in RGS Surrey Hills. As Headmistress, I would like to welcome you to our school and hope you enjoy reading our prospectus.

RGS Surrey Hills is a co-educational day and boarding school for students aged 11–18, set in the beautiful Surrey countryside and only 50 minutes from central London.

We are proud to be part of the **Reigate Grammar School Family of Schools**, one of the UK's top-performing independent groups. This gives our students access to **academic expertise, global opportunities, and shared resources**, of a large group of schools while we ourselves remain a close, caring community where every child is known and supported.

With students from over **30 nationalities**, our community is vibrant and international. Some join us for a short stay, some for one year, and others for their full school journey. Whatever the length of time, all students gain **English fluency, confidence, and friendships that last a lifetime**.

A handwritten signature in black ink, which appears to read 'Hayley Robinson'. The signature is fluid and cursive.

Hayley Robinson | Headmistress





Why Choose RGS Surrey Hills?

- **Proud Member of the Reigate Grammar School (RGS) Family of Schools** – part of one of the UK's top-performing groups.
- **RGS style teaching and learning** – students benefit from the proven RGS approach to teaching and learning, an academically rigorous, supportive style that drives improvement and delivers outstanding results.
- **Just outside London** – 50 minutes from central London; 40 minutes from Heathrow airport; 30 minutes from Gatwick airport.
- **Round Square Global Network** – giving students access to exchanges, conferences, workshops, and service projects worldwide.
- **Over 30 nationalities** – a diverse and welcoming community.
- **Flexible, academically ambitious learning pathways** – choose from one-year GCSE, GCSE, A-Levels, IB Diploma, EAL programme and more.
- **Study alongside local students** – study the full range of courses with UK students, with plenty of opportunity to immerse yourself to perfect your English.
- **Outstanding co-curricular life** – sport, arts, adventure, and leadership.
- **Home of football excellence** – partnerships with grass roots and professional clubs.
- **Family-style boarding** – safe, structured, and supportive.
- **Proven university success** – excellent preparation for UK and global university destinations.

Our Philosophy

Driven by the Round Square IDEALS, our school takes a bold, holistic approach, nurturing the whole child, fostering ambition, and empowering every student to thrive, reaching their full potential.

Big Heart.

Students feel safe, supported, and cared for in our family-style boarding houses.

Big Opportunities.

With a wide range of subjects, co-curricular activities, and global projects, students discover passions and build skills for life.

Big Impact.

Our graduates leave ready for top universities in the UK and worldwide, with the confidence to succeed.





“

It feels like a family –
but one that connects
you to the wider world.

PARENT FROM CHINA



Big Opportunities.



Round Square

We are a founding member of the **Round Square global network**, a group of 200+ schools in 50 countries. Together, we share a commitment to six **IDEALS: Internationalism, Democracy, Environmentalism, Adventure, Leadership, and Service.**

For our students, this means:

- **Global Classrooms** – joining lessons and projects with schools around the world.
- **Virtual Workshops** – connecting with peers overseas to explore new ideas and challenges.
- **Student Exchanges** – living and learning abroad, with opportunities to host visitors in return.

- **International Conferences** – where young people debate global issues, share ideas, and develop leadership skills.
- **Service Projects** – both local and international, making a positive difference in communities.

These experiences are life-changing, helping our students grow into **confident global citizens** with a strong sense of purpose.



The friendships you make are so special, all the socials bring you together and it's just so much fun to be part of this community that we all have.

YEAR 7 BOARDER, ITALIAN

Our Programmes

Year 7 and Year 8

The academic curriculum is carefully planned to ensure a breadth and balance of subjects. The Year 7 and Year 8 programmes include the study of a full range of subjects: English, Mathematics, Sciences, History, Geography, French, Spanish, Art, Drama, Music, Design Technology, Physical Education and PSHE.

GCSE Programmes

The RGS Surrey Hills GCSE programmes start in September.

Students following the standard curriculum take up to 10 different subjects, choosing a balanced mix of core subjects (English, Mathematics, Natural Sciences) and four subjects from the human sciences, languages and the arts.

Students aged 15-16 with a suitable level of English join the one-year GCSE programme featuring the study of a minimum of 6 subjects.

Standard GCSE Programme

Features: a broad GCSE curriculum over two or three years with our widest range of subjects.

Age: 13 or 14 years old

Entry Requirements: school reports, online tests in English and Maths, interview and school reference.

Minimum English language level: B1-B2

Course length: 2 or 3 years

Subjects studied: English Language, English Literature, ESL/ EAL, Mathematics (and Further Mathematics), Combined Science Trilogy, plus options from Business Studies, Computer Science, Creative Arts – Art, Craft and Design, Creative Arts– 3D Design, Dance, Drama, French, Geography, History, Music, Religious Studies, Spanish, Sport Science.

End of course assessment: GCSE examinations in more than one paper per subject. Some GCSE courses also include Non-Exam Assessment (or coursework).

Progression: students progress to IB, A-level and BTEC programmes.



“

Sending our daughter to RGS Surrey Hills was a big step, but she felt at home from day one.

The care, structure and opportunities here are exceptional.

PARENT FROM THAILAND

1 Year GCSE (Year 10 – 11)

An intensive GCSE programme which is completed in 1 year.

This programme provides excellent preparation for international students before they begin their A level or IB Diploma studies.

Features: the study of 6 subjects with the option of taking additional GCSEs in languages already learnt at school or spoken at home

Age: 15-16 / 16-17

Entry Requirements: school reports, online tests in English and Maths, interview and school reference. With the exception of Business Studies, GCSE courses normally assume 2-3 years of prior learning in a subject area.

Minimum English language level: B1-B2

Course length: 10 months

Subjects studied: English (First Language or ESL), Mathematics plus four subjects from Biology, Chemistry, Physics, History, Geography, French, Spanish, Art. First Language German and Latin tutoring are also available.

End of course assessment: GCSE examinations in more than one paper per subject.

Progression: students progress to IB, A-level and BTEC programmes.



A Level Programme

The A-level programme is a rigorous pre-university programme involving the study of 3 or 4 subjects.

Features: students in Y12 and Y13 have a dedicated Sixth Form Centre with modern study facilities shared with IB diploma students

Age: 16-17

Entry Requirements: school reports, online tests in English and Maths, interview and school reference.

Minimum English language level: B2 or C1.

Course length: 2 years.

Subjects studied: Art Craft and Design, Biology, Business Studies, Chemistry, Computer Science, 3D Design, Economics, English Literature, English IELTS, French, Further Mathematics, Geography, History, Mathematics, Media Studies, Music, Photography, Physical Education, Physics, Politics, Psychology, Spanish, Theatre Studies.

End of course assessment: examinations in more than one paper per subject. Some A-level courses also include Non-Exam Assessment (or coursework).

International Baccalaureate Diploma (IB)

Six subjects plus core elements, encouraging global awareness and academic breadth.

Features: students in Y12 (DP1) and Y13 (DP2) have a dedicated Sixth Form Centre with modern study facilities shared with A-level students

Age: 16-17

Entry Requirements: school reports, online tests in English and Maths, interview and school reference. Background knowledge is required for most IB courses whether taken at Higher Level or Standard Level, with the exception of Business Management, Economics and ab initio language courses.

Minimum English language level: B2 or C1

Course length: 2 years

Subjects studied: Language A Literature or Language A Language **and Literature** courses available in English, French, German, Spanish, Italian, Russian, Japanese, Chinese; Language A SSST Literature in any language; Language B courses in French and Spanish; Language ab initio courses in French and Spanish; History, Geography, Business Management, Economics, Psychology; Biology, Chemistry, Physics, Environmental Systems and Societies, Sports Exercise and Health Science; Mathematics Analysis and Approaches, Mathematics Applications and Interpretation; Visual Arts.

End of course assessment: an Internal Assessment (coursework) in all subjects and two or three examination papers in each subject.

English Preparation Programme

Features: an intensive programme which emphasises language improvement over one, two or three terms to prepare pupils for entry to mainstream education

Age: 11-14

Entry Requirements: school reports, online tests in English and Maths interview and school reference

Minimum English language level: A2

Course length: from one to three terms

Subjects studied: English as an Additional Language, Mathematics, Sciences, Geography, History, Art

End of course assessment: internal school assessments

EAL and Learning Support ensure every child has the tools to succeed.



Pathway Preparation Programme

Features: a programme over one, two or three terms to prepare students for entry to our GCSE, IB and A-level programmes

Age: 14-16

Entry Requirements: school reports, online tests in English and Maths, interview and school reference

Minimum English language level: A2 - B1

Course length: from one to three terms

Subjects studied: English as an Additional Language, Mathematics, Sciences, taster courses in Business Studies, Economics, Geography, History, Art

End of course assessment: internal school assessments.

Whichever pathway they follow, students benefit from **expert teaching, personal guidance, and strong support**. Many progress to leading UK and international universities, including Russell Group institutions.



Example of co-curricular activities:

- High ropes
- Crafting / Knitting
- International History Film
- Salsa Dance
- Steel Pan Drums
- Production
- Origami Creation
- Book Club
- British Sign Language
- Chess
- Modern Dance
- Model United Nations (MUN)
- STEM Go-Kart
- Walking
- Outdoor Education
- Round Square Committee
- French Board Games
- Orchestra
- Astronomy
- Spin Bikes
- Yoga
- Cooking for University
- Debating Club
- STEM
- Artists' Printing
- Social Media Creators
- EAL Enrichment
- Horrible History Club
- Gardening
- Clay Sculpture
- Football
- Hockey
- Netball
- Swimming
- Golf
- Horse Riding

Co-Curricular and Enrichment

At RGS Surrey Hills we offer over 100 opportunities for clubs and enrichment activities. Life and learning here go far beyond the classroom. Students explore passions and discover talents through:

Sport: Football, rugby, netball, basketball, cricket, tennis, athletics and more.

Arts: Drama, dance, LAMDA, music ensembles, art and design.

Adventure: Duke of Edinburgh's Award, mountain biking, climbing, expeditions, and international trips.

Leadership and Service: Model United Nations, student committees, charity projects, and Round Square initiatives.

Every student is encouraged to try new things, step outside their comfort zone, and enjoy a rich and memorable school life.

High Performance Football Programme

Football is a focus sport at RGS Surrey Hills, where we aim for football excellence, with links to local clubs and national coaches, who train our 1st XI football team, attend our fixtures and are also developing our girls' football provision.

Provision includes strength and conditioning training, football coaching, matches against other schools, participation in tournaments and festivals and residential camps led by local football clubs.

*There are no glass ceilings at
RGS Surrey Hills — we believe every student
can achieve success.*



Big Impact.



Results and Destinations

GCSEs

77% of students achieved grades 7 or above

IB

94% pass rate with average point scores above the world average

A-Levels

over 90% pass rate

University Stats

Students enter their universities of choice, with over **40% entering Russell Group UK universities**, a similar number joining university programmes around the world, and some going on to degree apprenticeships



Big Heart.

Boarding Life and Wellbeing

Boarding is at the heart of our school. With six houses, each led by experienced House Parents, boarding life is fundamental to who we are as a community.

Every house ensures a sense of belonging and supports boarders in their busy, active lives. Students settle quickly and feel at home.

Boarding houses are comfortable and welcoming, providing a sense of safety and belonging. At the same time, they are supportive environments in which academic focus and progress are maintained.

At RGS Surrey Hills, we have an active, engaging boarding programme 7 days a week and an extensive programme of evening and weekend sports, activities and trips.

- A **safe, structured environment** with **onsite medical centre** and nurses, healthy meals and clear routines.
- Our **Wellbeing Hub** offers a calm, welcoming space for guidance and reflection.



A Day in the life of a Boarder

Typical boarding week (Monday – Friday)

Students can arrive Sunday evening or Monday morning but must be at school by 8.15am



Wake up
7am



Breakfast
7.20am - 7.50am



Start of the school day
8.15am

Morning : 7am Wake up · 7.20am – 7.50am Breakfast in the Dining Hall (choice of hot and cold food available) · 7.50am After breakfast students return to houses and continue getting ready for school · 8.15am Start of the school day, Registration in Tutor Rooms · 8.40am – 10.30am Lessons · 10.30am – 10.50am Break · 10.50am – 12.40pm Lessons



Lunch
12.40pm - 1.45pm



Lessons
10.50am - 12.40pm



Break
10.30am - 10.50am

Afternoon : 12.40pm Lunch in the Dining Hall (choice of hot and cold food available) · 1.45pm Registration · 1.45pm – 4.30pm Lessons · 4.30pm School finishes, boarders can return to houses to get changed · 4.30pm All boarders to the dining hall for Tea (snack and drink) · 4.30pm onwards Various daily activities, visit friends in other boarding houses, go to the Sports Centre, Gym, Music Room and Dance Studio to practice or simply enjoy quiet time



Lessons
1.45pm - 4.30pm



End of the school day
4.30pm



Free Time
4.30pm - 6.30pm

Evening : 6.30pm Evening meal in the Dining Hall · 7.00pm Prep in House (Years 7-11) · 7.30pm Prep in House (Sixth Form) · 9.15pm Registration in houses (Years 7 – 11) · 9.30pm Registration in houses (Sixth Form) · 9.30pm Bedtime, quiet time and reading (Years 7-9) · 9.45pm Bedtime, quiet time and reading (Years 10-11) · 10.30pm Bedtime, quiet time and reading (Sixth Form)



Bedtime
9.30pm - 10.30pm

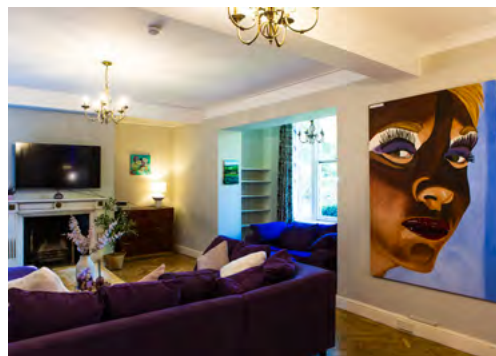
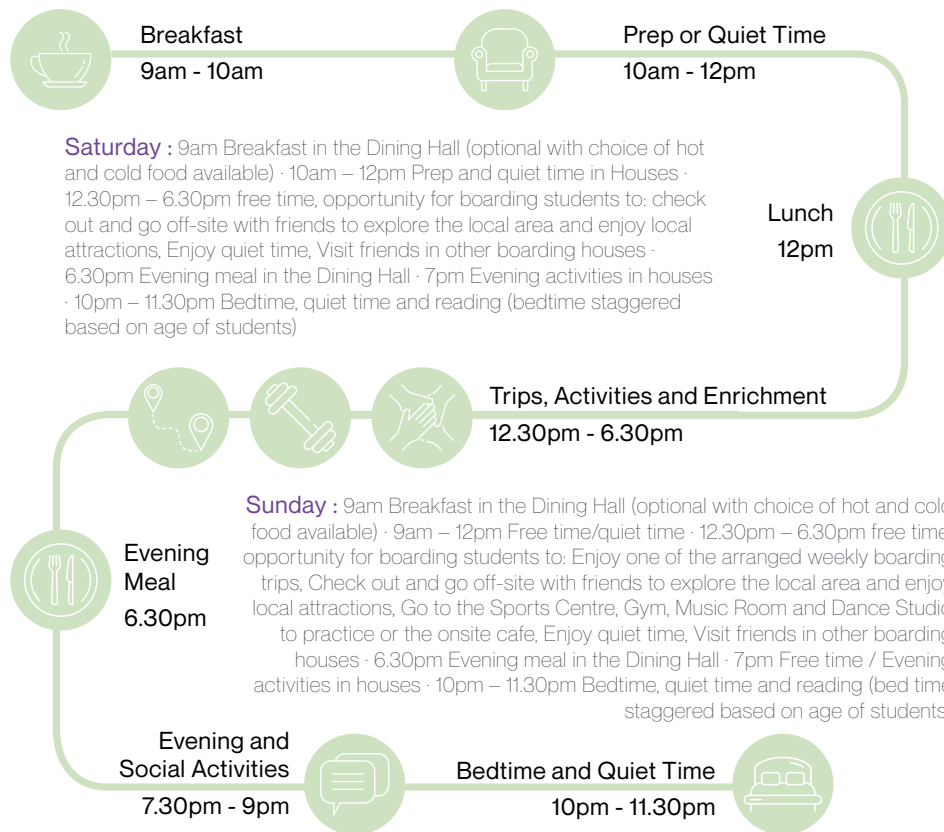


Prep
7pm - 9pm Yrs 7-11
7.30pm - 9.15pm Yrs 12-13



Evening Meal
6.30pm

A weekend in the life of a Boarder





Find Us. Join Us.

Admissions

Our Admissions Team is experienced in supporting families worldwide. We provide:

- **Virtual tours and digital brochures** on our website
- **Online interviews**
- **Visa support and guidance** through our professional Immigration and Visa Services partner
- **Flexible entry points** at Year 7, Year 9, Y10, Y11 and Sixth Form, with short-term placements also available.

Email:

Registrar@rgs-surreyhill.org





RGS SURREY HILLS

Proud member of the Reigate Grammar School Family of Schools,
nurturing every child to aspire and achieve their dreams.

DAY, WEEKLY AND FULL BOARDING

RGS Surrey Hills | London Road | Mickleham | RH5 6EA | +44 (0)1372 373382

rgs-surreyhills.org



@RGS_SURREYHILLS



@RGSSURREYHILLS

